

# Science-Café Experiences. Insights of Milan.

Daniele Balboni  
Caffè-Scienza Milano

SciCafé 2012 Conference  
Europe's Science Cafés Thinking Forward  
Crete, Greece, 1-5 July 2012



# Caffè-Scienza Milano - essentials

## MILESTONES

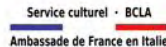
- 26th October 2006: first event.
- Dec. 2010: Cultural Association constitution.
- 2006-2012: 10 cycles. 27 debates.

## FEATURES

- Dialogue, openness, high scientific quality.
- Establishing partnerships.
- Taking opportunities.
- Adopting a spirit of discovery.

# Caffè-Scienza Milano: partners&locations

## Partners



## Locations

la Feltrinelli | Libri e Musica



Il Negozio Civico CHIAMAMILANO



terza edizione | milano 6/11 ottobre 2009



Crete – July 2012  
Daniele Balboni

# Caffè-Scienza Milano – The start

Thursday, 26th October 2006, 6pm

**Research and politics: a difficult dialogue**

**Enrico Bellone**

(Dept. of Physics - University of Milan)



Prof. Enrico Bellone  
(1938-2011)

**“Historically, in Italy, basic research has never been considered as a part of culture. Moreover the majority of politicians rarely had the necessary know-how to realise that the wealth of a nation is primarily based on research strength and cultural development in a scientific direction. “**

**DID WE JOIN A NEW WAY OF  
DOING SCIENTIFIC CULTURE ?**

# Caffè-Scienza Milano has Physics in its blood

26-10-2006 was the start of a long series of science-cafès with physicists of the University of Milan:

Dietmar Klemm  
plucks  
**SUPERSTRINGS**

Alberto Vailati  
throws  
**LIQUIDS**

Gianluca Alimonti  
plays cards with  
**ENERGIES**

Francesco Ragusa  
kicks  
**ELEMENTARY  
PARTICLES**

Nicola Ludwig  
restores  
**WORK OF ART**

Daniele Mennella  
plays  
**MODERN  
COSMOLOGY**

Marco Airoidi  
forecasts with  
**ECONOPHYSICS**

and many others



# Challenging other barriers

in the core of Milan, May 2012



San Vittore Prison  
4 lessons - debates on



**“The access to resources: agro-food and water”**

# Caffè-Scienza Milano

What we learnt: inside a prison are vividly present intellectual curiosity, cultural interests, relevant experiences.



“Cesare deve morire”, a Fratelli Taviani film at Rebibbia Prison (Rome) 2011

“Art is the first expression of freedom, in some case the only one”

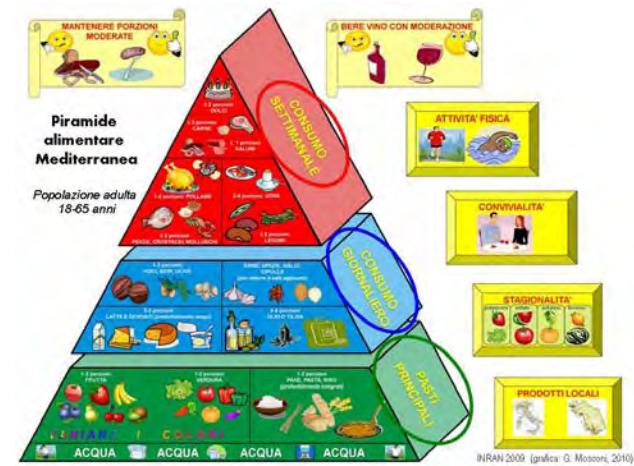
We add:

Scientific knowledge too



# Caffè-Scienza Milano

Agro-Food, a way to discover other insights of Milan: **proximity agriculture, nutrition science, children diet and school refectory, service co-designers**

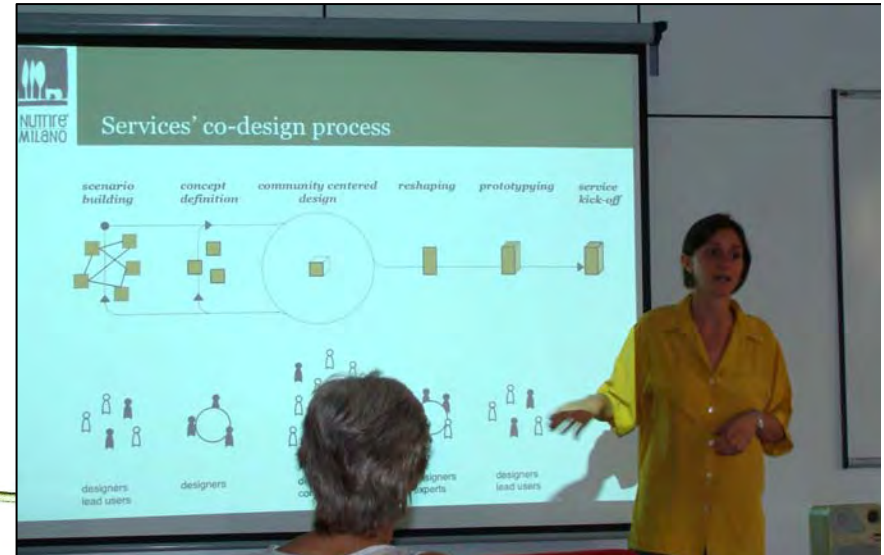


09/2011: **lightened by children drawings Parents, Teachers, Pediatricians, Food Scientists discuss in a primary school, and ...**



# Caffè-Scienza Milano

... after some days, at Politecnico of Milan they (try to) co-design a proximity food supply

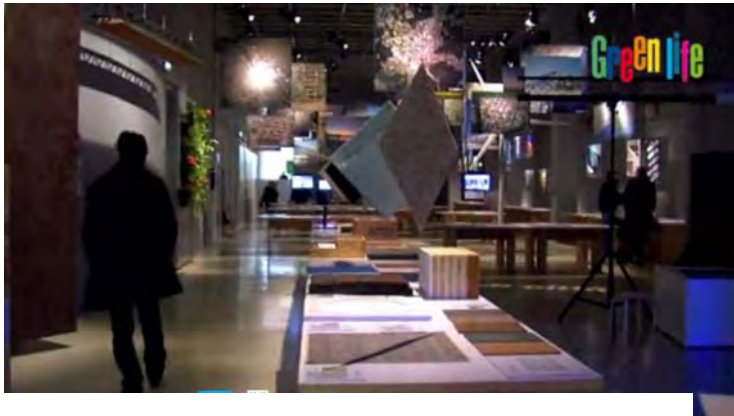


# An example of what Milan has developed in the area of agro-food of proximity during last years





# Triennale 02/2010: with **Green life** exhibition





# Caffè-Scienza meets European projects and breath

1ª giornata: **venerdì 28 ottobre 2011** h 17.30

**Lo stato di salute degli oceani e dei suoi ospiti**

Proiezione del film documentario

## Tipping Point - Punto Critico

di Nicolas Koutsikas e Laurence Jourdan

Regia: Laurence Jourdan

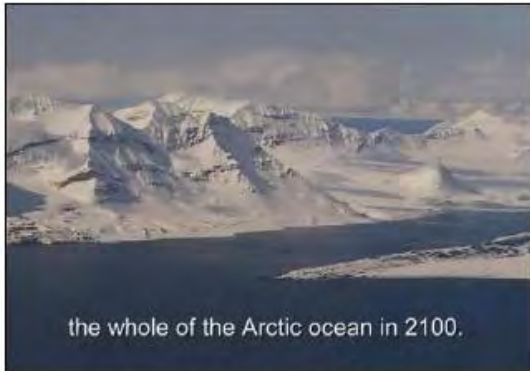
Georama TV Productions - Francia 2010 (54 min)

seguito da un incontro con:

**Jean-Pierre Gattuso**

del CNRS-Univ. Pierre et Marie Curie-Paris 6, coordinatore del progetto europeo EPOCA e consulente scientifico del documentario

e **Mauro Mariani** biologo marino, per molti anni direttore del Museo Civico di Milano.



the whole of the Arctic ocean in 2100.

Il riscaldamento delle acque e l'assorbimento di anidride carbonica da parte degli oceani sono elementi che contribuiscono al fenomeno dell'acidificazione. Si sa che gli organismi viventi reagiscono a questi cambiamenti, ma è impossibile che essi abbiano un impatto sulla loro morfologia. Esiste un punto critico oltre il quale l'acidificazione degli oceani diventa catastrofica? Splendide immagini della terra in



European Project on Ocean Acidification

Liberté, Egalité, Fraternité: at the root of European Citizenship

Oct-Nov 2011 - 3 days of

**Masterclasses with students**  
**Science-café**  
**Film showings**

In partnership with

uni(di)versité



Service culturel • BCLA  
Ambassade de France en Italie





and establishes Franco-Italian scientific conviviality



Crete – July 2012

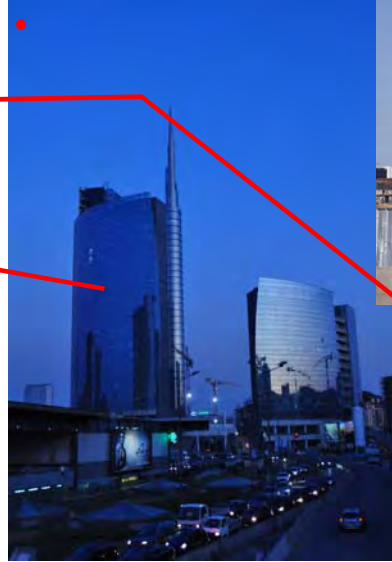
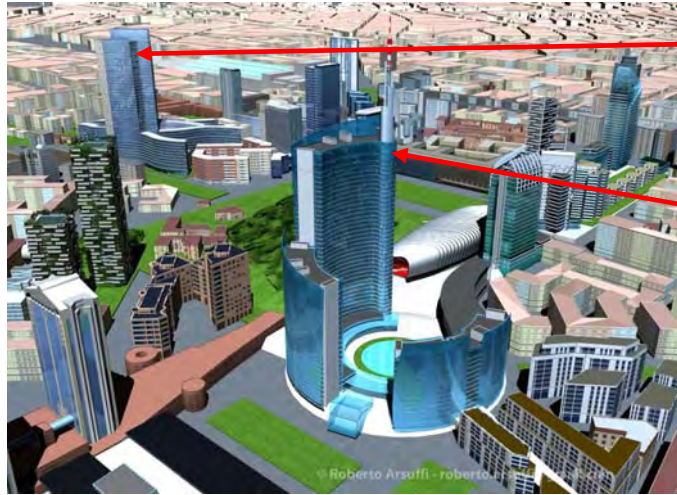
Daniele Balboni

alcune fotografie sono state alterate per rispetto della privacy



# Milan's transformations

## A changing face...



... needs its  
citizens hands  
and mind

# Milan's transformations

June 2011: Citizens express a clear idea of Milan in response to the Town Consultative Referenda  
“Would you like that Municipality of Milan supports and undertakes the following actions”

- To decrease traffic and smog through public transport development, extension of “ecopass” and pedestrianized centre;
- To double trees, public parks and gardens, to reduce soil consume
- Energy savings and reduction of greenhouse emissions
- Reopening of the “Navigli system”

% of voters: 49

| % Yes |
|-------|
| 79    |
| 95    |
| 95    |
| 94    |

# and people are there!



In Milan participation is bursting and we all have to be well informed and to develop public discourses, about techno-scientific aspects too.



# Insights of higher integration level

Figure 28:  
Spatial distribution of the functional area "science"



## Regional integration and networks of cities



### European global integration zones

- Metropolitan European Growth Areas (MEGAs) with five or six functions at global, European and transnational / national level \*
- European global integration zone and possible extension \*\*
- Global integration hinge region
- Potential European global integration zone and possible extension

### EUROCIITIES network

- Full member and associate members of EUROCIITIES

- Potential extension and modification of the ESPON global integration zones enclosing EUROCIITIES full and associate members

### The network of European metropolitan regions and areas (METREX)

- Cities and regions of the METREX network
- Representative Integrated Network Activity (RINA) according to PolyMetrexPlus - different colours indicate the different RINAs \*\*\*
- Potential extension and modification of the ESPON global integration zones by PolyMetrexPlus RINAs and METREX cities and regions

\* Decision making, administration, industry, tourism, transport, university

\*\* The European global integration zones consists of a group of ESPON MEGAs with at least one with all six functions covering. They are defined by internal cohesion defined by transport and the connectivity between the enclosed MEGAs by a travel time of 1 hour by air

\*\*\* The PolyMetrexPlus study identified 18 RINAs.

# What Caffè-Scienza Milano

would like ask to the network

- to build common initiatives and find economic resources (co-participation in future EU calls)
- to develop an interpretation framework and try to:
  - answer to questions like: what kind of value are we producing? How to sustain it?
  - characterize the actual type of participation in our cities and our ability of building some “public discourses” with the help of citizens
- to contribute to an idea of an integrated Europe and of an open, interconnected and friendly global society.
- to strengthen our identity and lobbying to impose our ideas about science&society and two-way dialogue.

# Some proposals

- To treat together some common themes, e.g.:
  - changing cities;
  - intellectual and social mobility;
  - to establish a partnership with similar subjects (e.g. with open universities).
  - ... ..
- Dissemination of the results of European projects (Horizon 2020)
- A project of crowd-science
- ... ..

# Horizons

A last insight on communication, civilization, culture.

“A civilization communicates the essence of its structure to works of art and of thought not promulgating an aesthetic theory but raising human condition and exalting the artist as a good craftsman”

(I. Stravinsky – Poétique musicale 1939-1940)